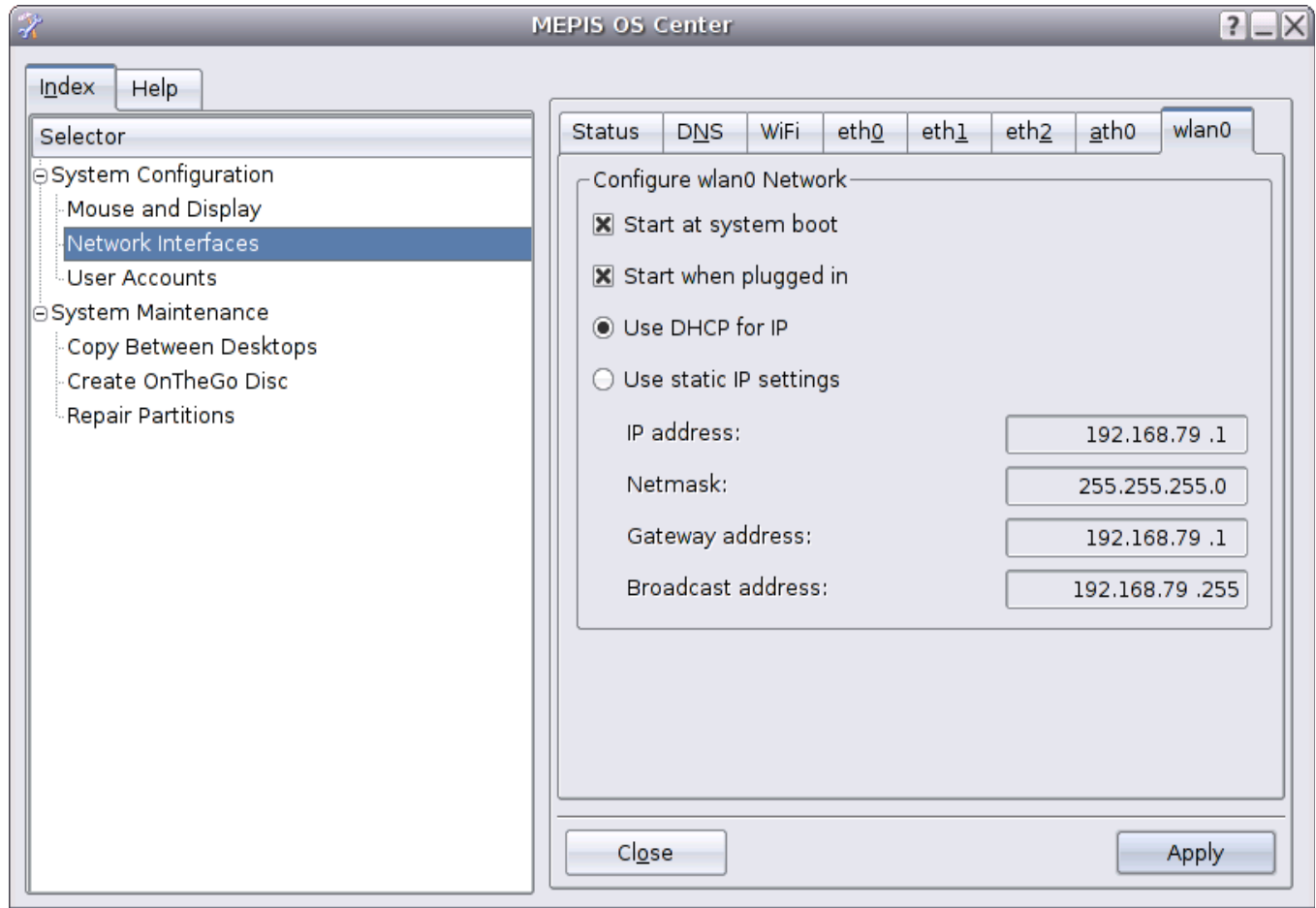
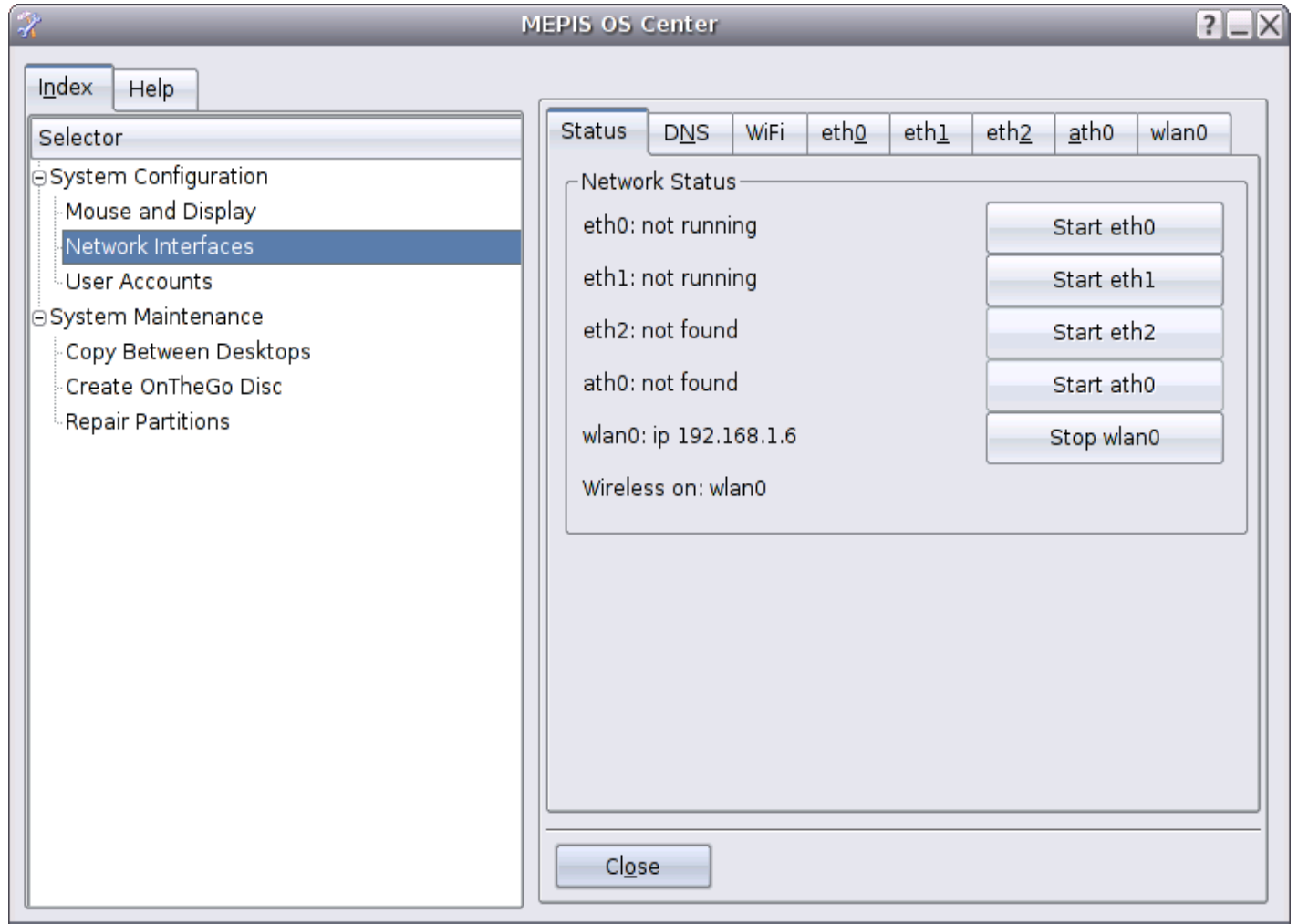


## For Wireless Lan to startup automatically

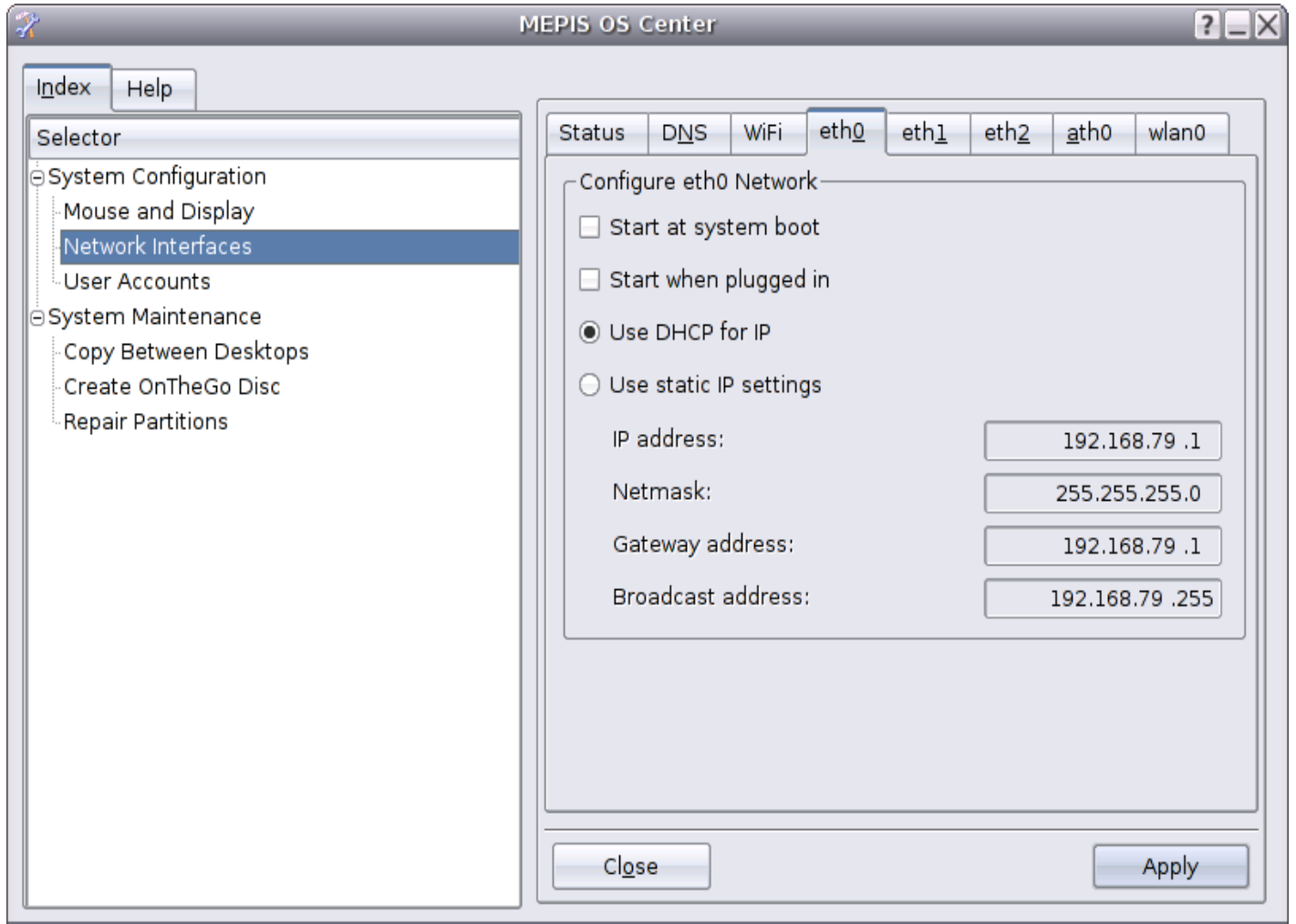
Check these following snap shots from MEPIS old OS Center Verify that wlan0 or ath0 is set to start at System boot up and start when plugged in. For a USB wireless, you can unplug and replug to kick the interface to reload, when you have a little problem



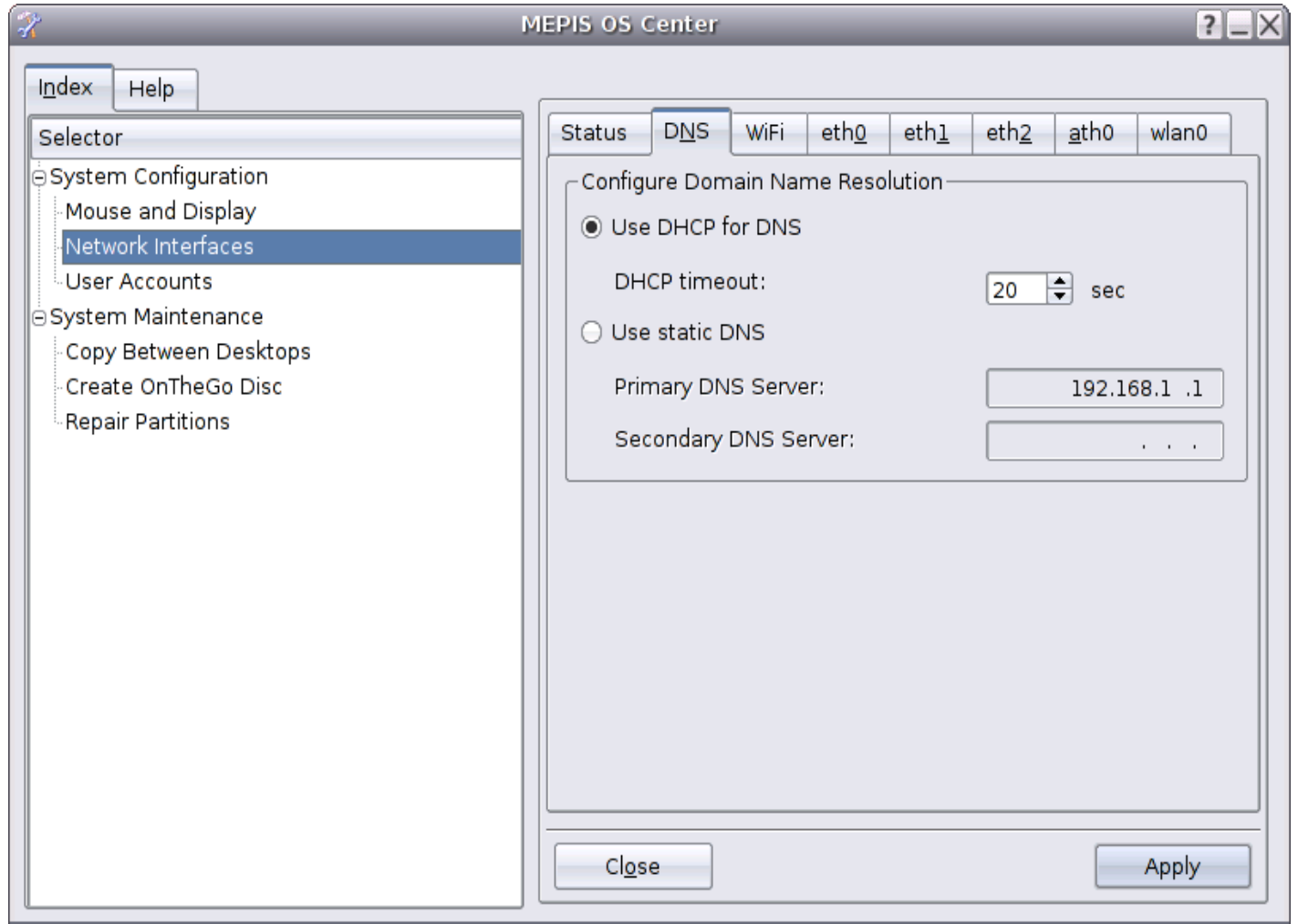
## Make sure other ethernet interfaces have been Stopped! Wireless5



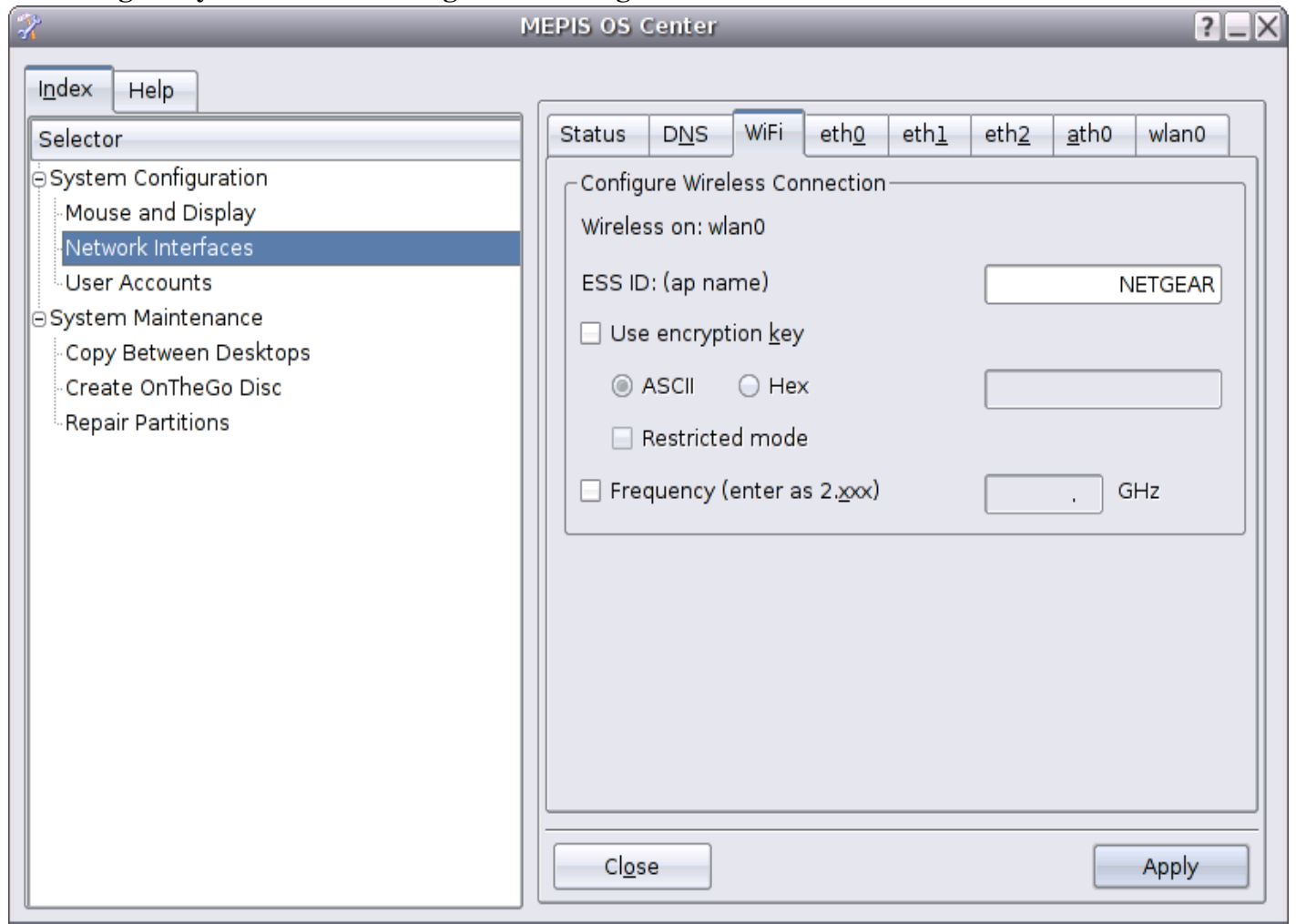
**UNCHECK BOX for ETH0 ethernet interfaces “startup at boot and start when plug in”.**



## Check that the DNS is picked up from the wireless access point through DHCP Wireless6



**Compare the WiFi tab to this snapshot. Look at ESSID "NETGEAR" is the open access point that we are connected to here! Use the ESSID "ANY" to search for open networks. From the command line in terminal window (like konsole), use "iwconfig wlan0 essid any channel 11" to configure by hand before having KWiFiManager scan for networks. Wireless7**



**KWiFiManager selects which network to connect with. The ESSID happens to be "NETGEAR" on some neighbors wireless access point. Another Neighbor uses the ESSID "linksys" Wireless10**

The screenshot shows the KWiFiManager interface with several windows open:

- Configure - KDE Control Module:** Shows configuration for wlan0. Network name is set to "ANY", operation mode is "Managed", and speed is "Auto".
- Interface wlan0 - KWiFiManager:** Shows connection status. It is currently "OUT OF RANGE" with a signal strength of 0. The status of the active connection shows it is searching for the "NETGEAR" network. Other details include access point MAC address 00:14:6C:1E:83:20, local IP 192.168.1.6, frequency 2.462 [11], and encryption off.
- Statistics - KWiFiManager:** Displays "Noise/Signal Level Statistics" as a line graph. The y-axis ranges from 0 to 27, and the x-axis shows time from -240 s to now. A legend indicates "BLUE = signal level, RED = noise level".
- Scan Results:** A table showing detected networks:

Network Name	Mode	Quality	WEP
NETGEAR	Managed	0	on
linksys	Managed	0	Signal level:0 Noise level:0 on

The desktop taskbar at the bottom shows the system tray with weather information (63°F, 9 MPH NNW, 30.07" Hg), the date (2006-07-14), and the time (9:08).

Wifi-Radar displays which network the wireless wlan0 is connected with. The ESSID happens to be "NETGEAR" on some neighbors wireless access point. Another Neighbor uses the ESSID "linksys" A third Neighbor has the ESSID of "AC" and is "LOCKED" as indicated by the lock icon. Note that Wifi-Radar and KwifiManager applets seem to conflict with each other. So only have one or the other executing at a time.

## Wireless12

